



mobileum

Action driven by intelligence



5G Edge Analytics



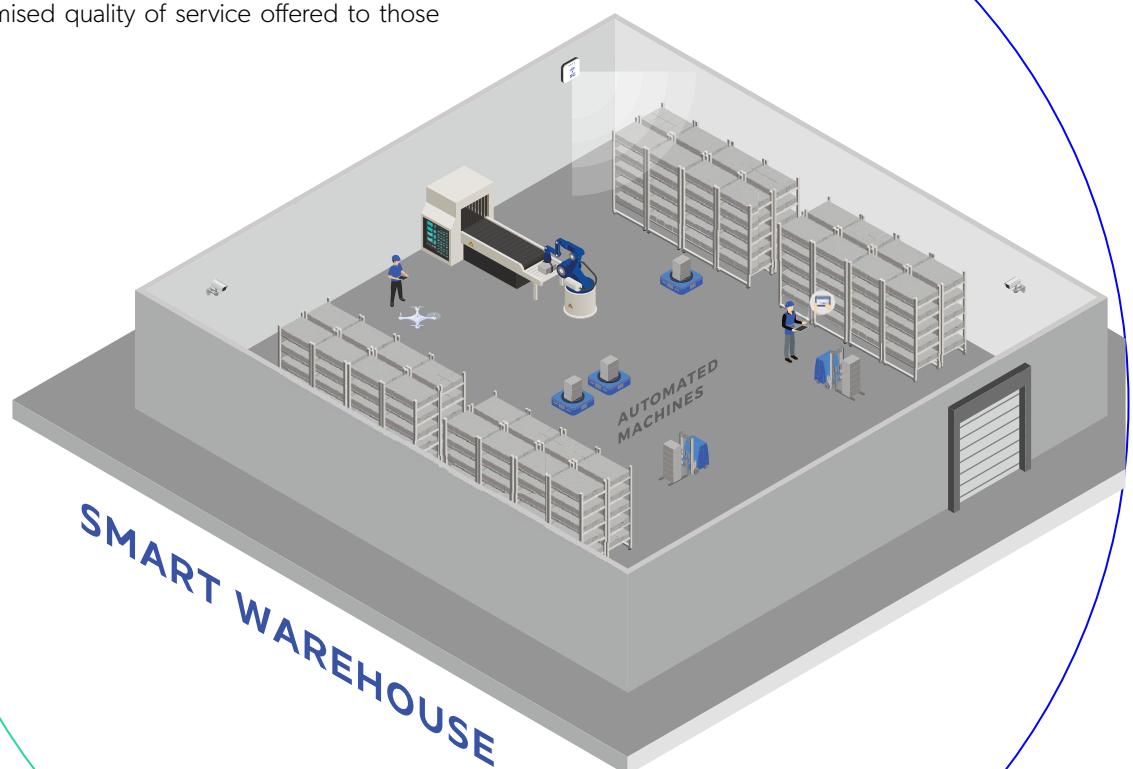
**testing,
assurance
& observability**

POWERED BY MOBILEUM

5G innovation can be a double-edged sword for enterprises that do not have direct visibility of their assets

Mobileum 5G Edge Analytics is a comprehensive solution that enables Enterprises to monitor and analyse the connectivity and data usage of all their devices (smart-phones, sensors, IoT) over private 5G networks or APNs.

This is essential on two fronts: to ensure network security, and verify that Communications Service Providers (CSPs) upkeep the promised quality of service offered to those Enterprises.



Monitor devices on 5G Speed up troubleshooting

THE 5G EDGE ANALYTICS SOLUTION GIVES ENTERPRISES THE ABILITY TO:



Directly monitor connectivity health

through access to both real-time and historical quality of service metrics



Minimise on-site maintenance interventions

by allowing remote validation of device status to determine the necessity of deploying field engineers



Identify issues affecting their devices

by detecting devices presenting sub-standard Service Rating Scores (SRS)



Identify rogue usage of legitimate SIMs or of non-authorised devices

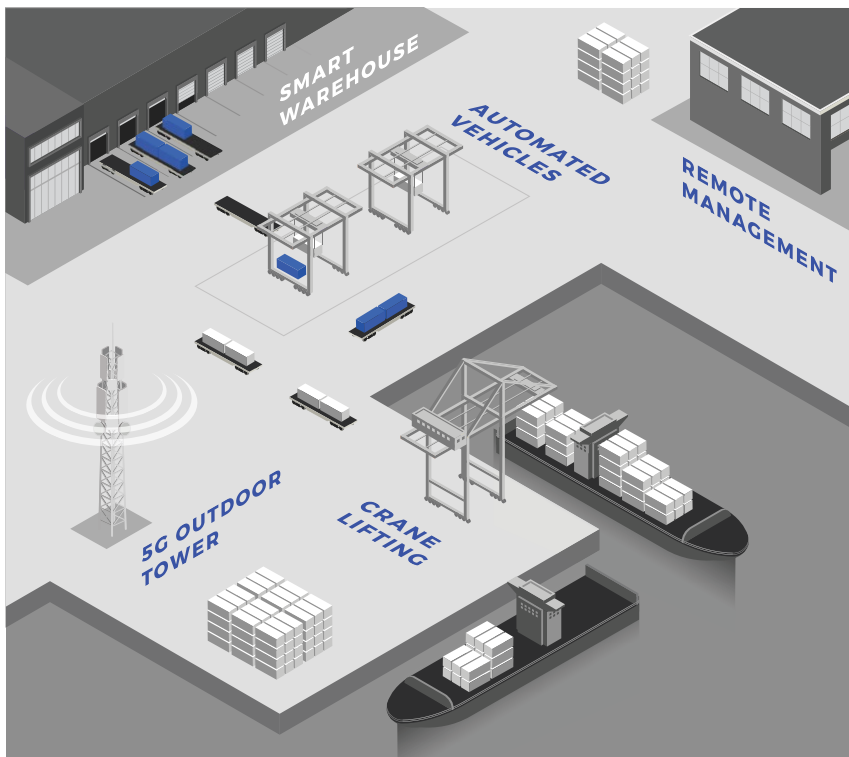
by detecting anomalous applications and non-authorised services



Increase precision in troubleshooting device-specific issues

through real-time and historical information from individual device usage

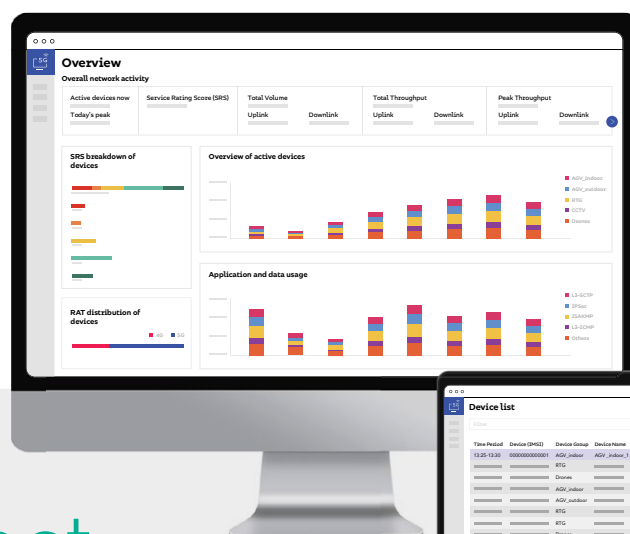




Lower costs, increase security

Achieve **greater operational efficiency and lower maintenance costs**, through an optimised investigation on connectivity issues

Experience **enhanced network security and asset protection**, through firsthand identification of irregular data usage



**data for illustration purposes only*

Detect more than 28K applications

Leverage Mobileum's evolved Deep Packet Inspection and augmented signatures intelligence technologies, detecting and classifying >28K applications and components

Make use of an Edge Analytics architecture that enables Enterprises to benefit from the evolution to multi-access edge computing (MEC) networks

Solution Specifications

THE 5G EDGE ANALYTICS SOLUTION PROVIDES ENTERPRISES WITH:



3 layers of intelligence

Network

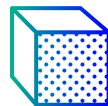
- Network performance monitoring down to the minute-level.
- Overview of device utilisation on the network.

Service

- Application and data usage insights.
- Unauthorized use identification.

Device

- Connection status and service quality.
- Enhanced devices analytics at the application-level.
- Real-time and historical location tracking of assets.
- Rogue device detection.



Multi-dimensional insights

Time Range

- Last 24 hours, and historical retention for up to 100 days for selected data.

Time Granularity

- Daily, hourly, 30-minute, 5-minute, 1-minute.

Dimensions

- From network down to device-level, by service (RAT), application (>28K), and device group.

Key Metrics and KPIs

- Volume, UL/DL Volume, Mean Throughput, UL/DL Throughput, Int/Ext Latency, and more.

Service Rating Score (SRS)

- Indication of service quality - bad, poor, fair, good, and excellent - calculated based on Mobileum rating system.

Location Insights

- CGI.

Why Mobileum?

Mobileum is a leading provider of Telecom analytics solutions for roaming, core network, security, risk management, domestic and international connectivity testing, and customer intelligence. More than 1,000 customers rely on its Active Intelligence Platform, which provides advanced analytics solutions, allowing customers to connect deep network and operational intelligence with real-time actions that increase revenue, improve customer experience and reduce costs. Headquartered in Silicon Valley, Mobileum has global offices in Australia, Germany, Greece, India, Portugal, Singapore, UK and United Arab Emirates.

More in www.mobileum.com

Meet us

