



# mobileum

Action driven by intelligence

# Delivering Uninterrupted Connectivity for the FIFA World Cup 2026

Special GlobalRoamer® Package



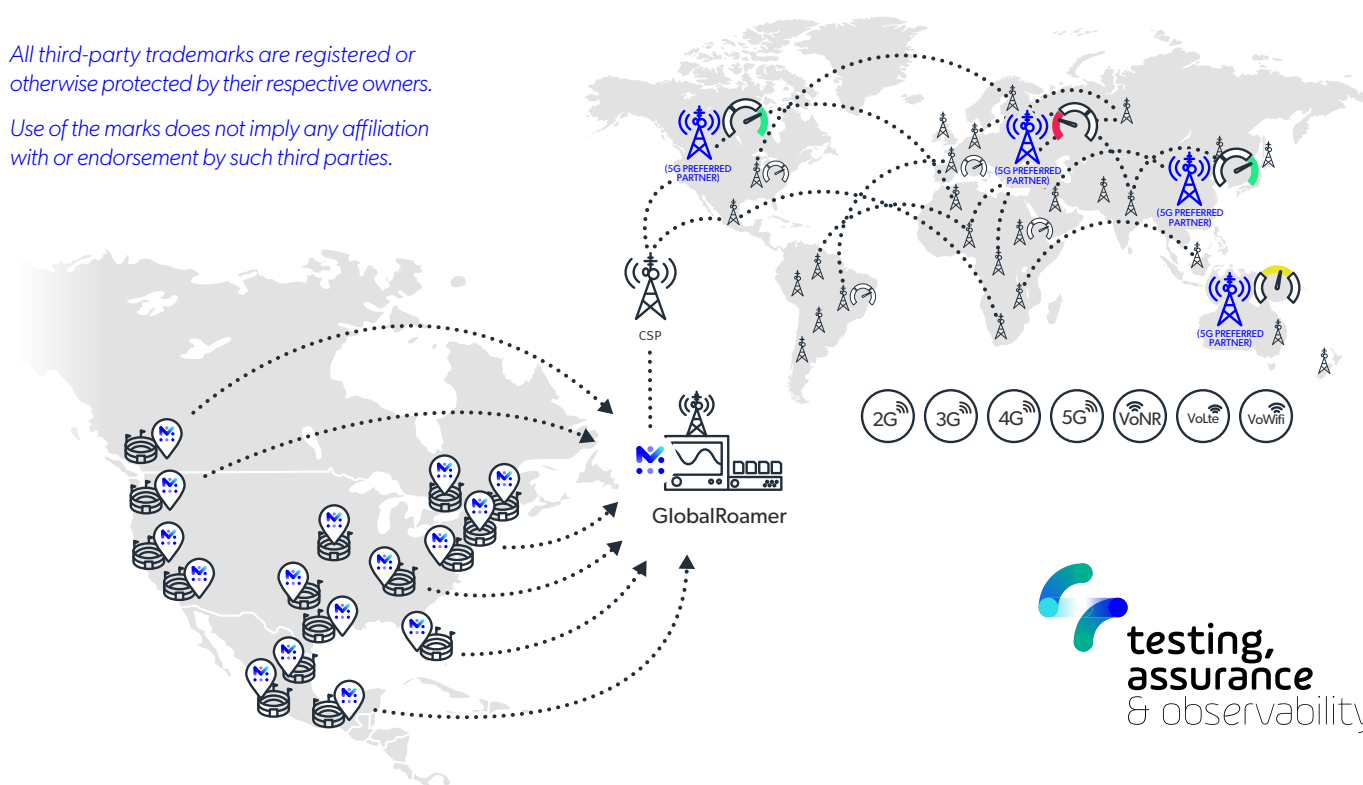
## Mobileum puts your network to the test — before the world does

The **FIFA World Cup 2026** will unite fans from across the globe across 16 stadiums in the **United States, Canada, and Mexico**. Millions of spectators, players, media representatives, and officials will depend on mobile connectivity to share, stream, and celebrate the action in real time. During these high-traffic moments, mobile networks face unprecedented pressure — with spikes in data, voice, and roaming usage that can cause severe drops in performance and user experience.

To help operators prepare for this global event, **Mobileum** offers its **GlobalRoamer®** ecosystem, enhanced with **existing and additional probes** deployed in and around key event locations. This enables operators to continuously assess service quality, network performance, and the readiness of critical technologies such as **5G and VoLTE**. Through proactive testing and benchmarking, operators can quickly identify issues, optimize partner performance, and ensure seamless, high-quality connectivity throughout the tournament.

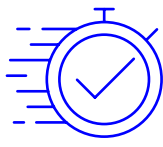
*All third-party trademarks are registered or otherwise protected by their respective owners.*

*Use of the marks does not imply any affiliation with or endorsement by such third parties.*





Ensure connectivity and essential services



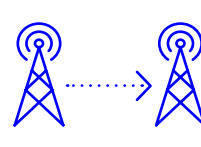
Check speeds



Verify network performance



Benchmark roaming providers

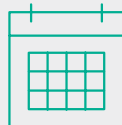


Identify bottlenecks



Detect degradation and failures

## Roaming Testing Stages



**Championship dates:** June 8 to July 3, 2026

**Testing campaigns:** 1 month before start until July 31

**Access to additional probes:** May 1 to July 31

## Key Benefits



Maintain regular roaming QoS campaigns without disruption



Access to all dedicated test locations across North America, deployed specifically for the event



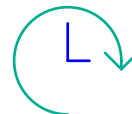
Comprehensive technology coverage, including all supported networks and capabilities



Four daily test campaigns across the major MNOs in the US, Canada, and Mexico for continuous visibility



Receive a daily performance report delivered every morning at 8:00 AM



Weekly cumulative report and interactive dashboard every Monday, consolidating all test results and insights



## Inbound and Outbound Roaming Use Cases: Maximizing Value

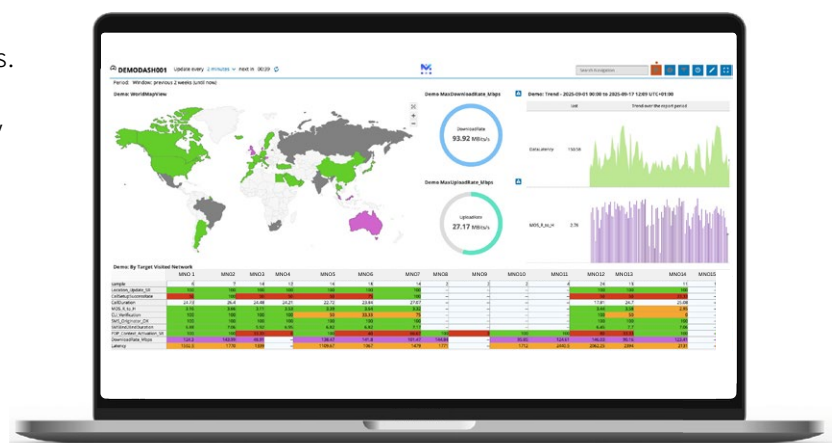
### Inbound Roaming (Focus on USA, Canada, and Mexico)

- Become the preferred network choice for your roaming partners during the World Cup period.
- Differentiate your network experience by identifying subscriber performance and quality of service across key venues early on.
- Benchmark your competitors' performance by collecting comparative metrics (requires customer-provided competitor SIMs in addition to own SIM cards).
- Position and tailor your offering to maximize visibility and roaming revenue opportunities throughout the World Cup period.



### Outbound Roaming (For operators in participating countries)

- Validate the quality of your roaming agreements before the influx of roamers into the host countries.
- Assess your steering policy with greater precision, zooming into venue-level QoS insights.
- Proactively manage your VIP accounts, ensuring optimal service and satisfaction.
- Develop and promote tailored roaming packages for the World Cup period to stay competitive against travel and eSIM providers.

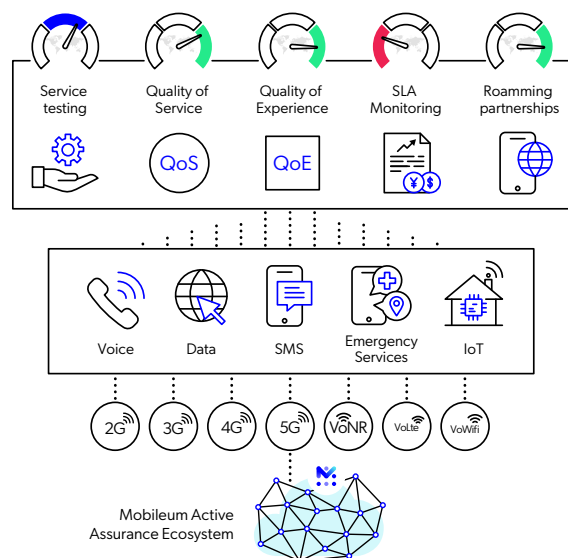


# About GlobalRoamer®

Mobileum's GlobalRoamer® is the world's largest end-to-end active testing footprint for roaming, covering over 98% of the globe and supporting 2G, 3G, LTE, CSFB, VoLTE, 5G, IoT, and Emergency Services.

By virtualizing any SIM to any location worldwide, GlobalRoamer® generates real mobile international traffic across our SIM pool of 500+ operators.

Its extensive library of test cases, real-time reporting, and automated alerts enable operators and service providers to assess and enhance network performance and user experience, detecting degradations, bottlenecks, and outages before they affect customers.



## The Use Cases:

- 5G Roaming
- VoLTE Roaming
- eSIM & Remote SIM Provisioning
- Emergency Services
- Global IoT Connectivity
- International Carrier Quality

## Why Operators Worldwide Choose GlobalRoamer®

<b>Safeguard roaming revenues</b>	Into roaming quality for any operator, anywhere in the world.
<b>Build an efficient, cost-effective strategy</b>	By leveraging GlobalRoamer®'s unmatched global testing footprint.
<b>Gain comprehensive insights</b>	By continuously monitoring service availability and performance through intuitive, real-time dashboards
<b>Access the industry's most advanced test case library</b>	Covering emerging technologies such as 5G and complex services like VoLTE.
<b>Benchmark operator performance</b>	Per country or roaming partner, comparing results against Average and Best-in-Class reference values.
<b>Verify interconnect quality</b>	And ensure all SLA commitments are met.
<b>Benchmark routes and make proactive, data-driven decisions</b>	To optimize network quality, partnerships, and cost efficiency.

## Why Mobileum?

Mobileum is a leading provider of Telecom analytics solutions for roaming, core network, security, risk management, domestic and international connectivity testing, and customer intelligence. More than 1,000 customers rely on its Active Intelligence platform, which provides advanced analytics solutions, allowing customers to connect deep network and operational intelligence with real-time actions that increase revenue, improve customer experience and reduce costs. Headquartered in Silicon Valley, Mobileum has global offices in Australia, Germany, Greece, India, Portugal, Singapore, UK and United Arab Emirates.

More in [www.mobileum.com](http://www.mobileum.com)

Meet us



**mobileum**

Action driven by intelligence